

BSc@ Workplace

Work-based Degree by YCMOU & MKCL

ybsc.mkcl.org

Work-based Degree Program by YCMOU in collaboration with MKCL



**Bachelor of Science in Computer
System Administration**



ज्ञानगंगा घरोगरी

YCMOU

ycmou.ac.in



MKCL

Creating a Knowledge Lit World

www.mkcl.org

About MKCL

Maharashtra Knowledge Corporation Limited (MKCL) is a high-tech initiative promoted by the Government of Maharashtra, India, in design, development and delivery of Education, Governance and Empowerment Technologies, Products, Solutions and Services to masses and has proven experience in the said fields.

Work-based Degree

An Innovative solution to workforce attrition in Maharashtra

Yashwantrao Chavan Maharashtra Open University (YCMOU) and Maharashtra Knowledge Corporation Limited (MKCL) have signed an agreement to propagate Work-Based Learning, derived from Gandhiji's Nai Talim as a result of which there is a proper match between the skilled manpower required and skilled workforce available.

Industries / Organizations provide real life work environment to the students enrolled for these unique programs through partnership with MKCL. The Industry workplace is the Learning Center for offering the Work-based Degree Program - BSc-CSA.

“Nai Talim is my last and finest gift to the world.”

-Mahatma Gandhi



Benefits

Benefits to the Industry

- Industry gets a dedicated manpower for a minimum period of 3 years with the least cost of recruitment.
- The industry gets assured manpower at a very reasonable cost of monthly stipend to the candidate for the services s/he provides.
- There is no binding that the industry partner has to absorb the candidate after the completion of 3 years. There is no risk of claims for permanency.
- The industry partner has the freedom to rotate the candidate in different departments or to train her/him in one particular department with intermittent training.
- The Student once registered, cannot change the workplace in-between the degree program.
- This clearly addresses the attrition issues and pay-back issues faced by the industry.
- The candidate can be hired as an intern or as an employee, as per company policy.

Benefits to the Student

- Workplace itself becomes their college.
- They earn 3 years BSc-CSA degree and 3 years Industry Experience Certificate
- The stipend proves to be a financial support
- The students get productive work experience along with their colleagues



Model of BSc@Workplace

Academic Methodology

BSc@Workplace offers flexible, work-based and sector-specific degrees that are custom-designed to suit the nature and needs of the businesses and industries. It offers a unique learning environment comprises of a workplace, eLearning framework and mentors.

Working

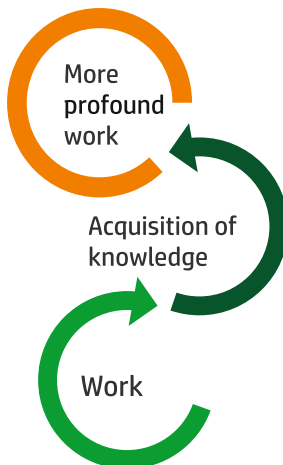
- Students are recruited in the industry for three continuous years.
- Students simultaneously get enrolled for the respective degree Program.
- Every day students perform actual productive work/task at workplace given by their appraiser.
- Students engage in wholesome work experience in the work and the workplace.
- They earn work credits from industry against their daily work.

Learning

- Students will complete eLearning sessions before and after workplace hours and on holidays.
- Students access MKCL's eLearning framework for theory of the degree program.
- Students also get an opportunity to build theoretical knowledge based on the work being performed by them.
- Student gets Knowledge credits by undergoing work related eLearning courses designed by MKCL.

Mentoring

- Student attend Reflection sessions with mentors
- Mentors are industry experts.



Industry Role

Industry Partner (IP) plays an important role in the overall development of a Learner. Its key areas of contribution are:

Workplace

IP provides real workplace to students. Students are expected to work at the workplace to perform real-life work.

While the students are enrolled for the degree program, they get accommodated in routine work environment and work as per the norms of Industry.

Work Ratings

Industry also contributes to the Degree by awarding Work Ratings to the students.

Work Ratings are based on the performance of students at the Workplace. Monthly performance ratings given by the appraisers get consolidated monthly for the award of Work Ratings.

Mentoring by Professionals

Industry contributes to the Degree Program by mentoring the students. Industry Professionals get appointed as Mentors to offer a 'human touch' in the overall learning process of the students.

Mentors assist students in synthesizing knowledge in context of work during reflection sessions. They guide students to derive theory from practice.



Mentor in the industry



Work Reflection Session

Program Details

Eligibility for admission

- Passed 10+2 or equivalent from a recognized institution
- Age 18 years and above at the time of joining
- Working/willing to work in IT/ITES industry as a full time intern / Employee
- Passed the entrance examination conducted for the purpose of admission to this programme

Duration

3 years, 6 semesters

3 years full time internship at workplace

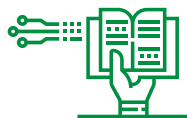
Program Fees

Rs. 18,100/- per year



Resources & Support

As a part of the Learning Environment, students will be provided with the following resources by MKCL:



- Study Material (eBooks)



- eLearning content comprising of Situation / scenario / case study / theory based content
- Student Login for eLearning platform with Learning Management Framework



- Evidence based e-Assessment and e-Assessment Framework for continuous comprehensive evaluation



- Work-forum, blog
- Interaction sessions with mentors in online or face to face mode or reflections on deriving meaning and value out of work.

Curriculum

Year 1

Semester 1

- Business Communication – 1
- Introduction to IT Hardware
- Introduction to IT Networks
- IT Skills – Basics
- Lab: Troubleshooting IT Hardware
- Lab: Troubleshooting IT Networks
- Lab: IT Skills – Basics

Semester 2

- Environmental Science
- Computer Security Basics
- Desktop Operating Systems
- Managing and Maintaining Desktop OS
- Lab: Computer Security Basics
- Lab: Desktop Operating Systems
- Lab: Managing and Maintaining Desktop OS

Year 2

Semester 3

- Business Communication – 2
- Configuring Windows
- Managing and Maintaining Windows
- Configuring Windows Server
- Lab: Configuring Windows
- Lab: Managing and Maintaining Windows
- Lab: Configuring Windows Server

Semester 4

- IT Infrastructure Support Services
- Configuring Windows Server Active Directory
- Configuring Windows Server Network Infrastructure
- Managing and Maintaining Windows Server Network Infrastructure
- Lab: Configuring Windows Server Active Directory
- Lab: Managing and Maintaining Windows Server Active Directory
- Lab: Managing and Maintaining Windows Server Network Infrastructure

Year 3

Semester 5

- Soft Skills – 1
- Red Hat Linux Basic Administration
- Configuring and Maintaining Red Hat Linux Systems
- Red Hat Linux Advanced Administration
- Lab: Administering Red Hat Linux Systems – 1
- Lab: Administering Red Hat Linux Systems – 2
- Lab: Administering Red Hat Linux Systems – 3

Semester 6

- Soft Skills – 2
- Ethical Hacking
- Advanced Security Practices
- Lab: Ethical Hacking
- Lab: Advanced Security Practices
- Final Year Project

BSc@ Workplace

Work-based Degree by YCMOU & MKCL

ybsc.mkcl.org



ज्ञानगंगा धरोघरी

YCMOU

ycmou.ac.in

Yashwantrao Chavan Maharashtra Open University (YCMOU)

Dnyangangotri Near Gangapur Dam, Govardhan, Nashik,
Maharashtra 422222



MKCL

Creating a Knowledge Lit World

www.mkcl.org

Maharashtra Knowledge Corporation Limited (MKCL)

ICC Trade Tower, 'A' Wing, 5th Floor, Senapati Bapat Road,
Shivajinagar, Pune 411 016, Tel:-020 4011 4500