

MKCL Finishing School

Work-Based Degree Programs



In Collaboration with

**BSc@
Workplace**

Work-based Degree by YCMOU & MKCL



ज्ञानगंगा घरोघरी

Yashwantrao Chavan
Maharashtra Open University

B.Sc.
(Computer System Administration)



ज्ञानगंगा घरोघरी

Yashwantrao Chavan
Maharashtra Open University



MKCL

Creating a Knowledge Lit World

www.mkcl.org

MAHARASHTRA KNOWLEDGE CORPORATION LIMITED

Maharashtra Knowledge Corporation Limited (MKCL) was promoted by the Department of Higher and Technical Education (H & TE), Government of Maharashtra (GoM), India and was incorporated under the Companies Act, 1956.

In order to make the capabilities of MKCL available to all the Departments of Government of Maharashtra, governmental coordination of the affairs of the company has been handed over from January 05, 2018, to the General Administration Department (GAD) from Department of Higher & Technical Education. Subsequently, it was allocated to Directorate of Information Technology under GAD.

Click here to know more about us : <https://mkcl.org/about-mkcl>



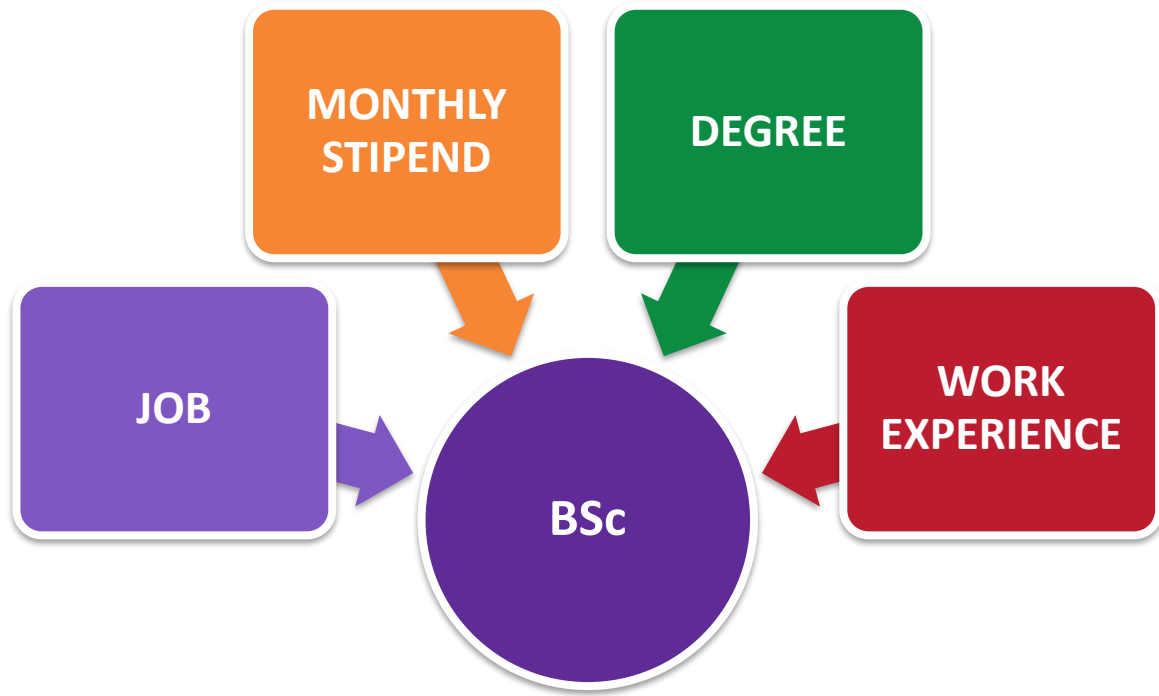
MKCL Finishing School



MKCL Finishing Schools (MFS) offers a series of Role Based and Work and Performance Centric distance education degree. The programs under MFS are implemented in the real-life work environments of the industry.

These are in form of e-learning supported internship mode wherein the Learners get an intensive exposure, expertise and experience of wholesome work under the guidance of mentor.

To know more, please visit: mfs.mkcl.org



**BSc@
Workplace**

Work-based Degree by YCMOU & MKCL

Work Based Degrees

- Degree Program offered by MKCL and Yashwantrao Chavan Maharashtra Open University
- BSC(Computer System Administration)
- 1 Batch: July
- Course Fee: 15,100/-Per Year (For Student)



Why Work based Degree Program?

- Education, Experience & Earning at the same time.
- Practical experience in a company for 3 years while pursuing studies.
- Monthly stipend as indicated by the company.
- Enhance your skills and career opportunities.
- Study a degree that is varied, flexible and accessible.
- Work on real-world projects, getting valuable experience while helping your employer.
- Work-based e-Learning with mentoring by industry professionals.

Bachelor of Science

Computer System Administration

**BSc@
Workplace**

Work-based Degree by YCMOU & MKCL

<https://ybsc.mkcl.org/>



ज्ञानगंगा घरोघरी

Yashwantrao Chavan
Maharashtra Open University



MKCL

Creating a Knowledge Lit World

www.mkcl.org

B.Sc. CSA

**BSc@
Workplace**

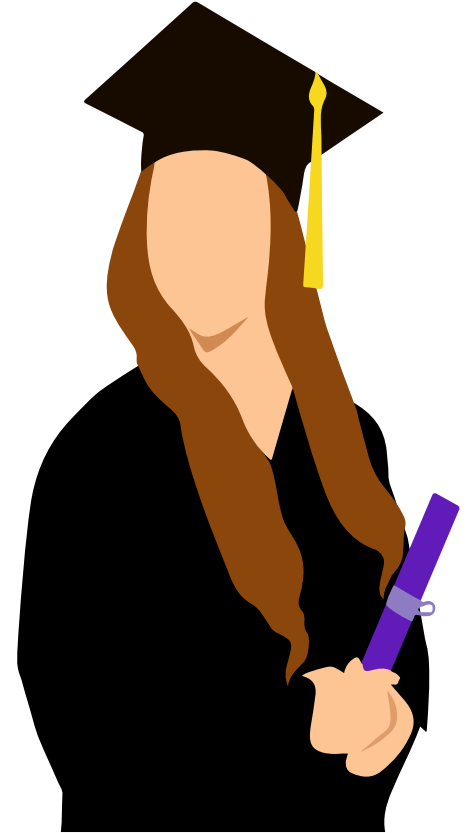
Work-based Degree by YCMOU & MKCL

B.Sc. in Computer System Administration

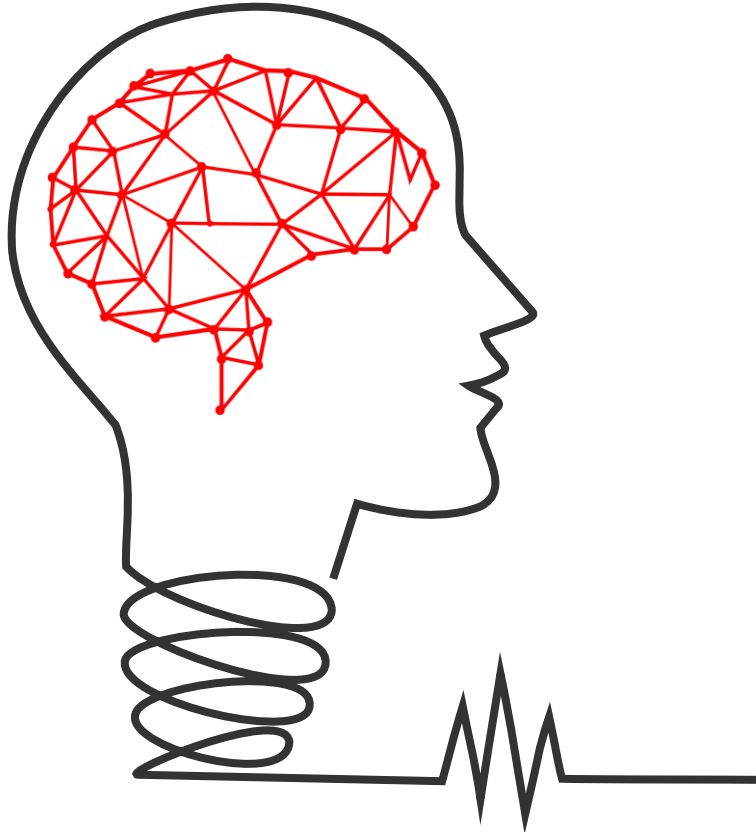
B.Sc. in Computer System Administration program has been specially designed for young aspiring professionals who want to pursue a bright career in IT infrastructure and support industry!

Degree with a difference!

- Students of this degree program are expected to work in real life work environment of a service sector company for three years.
- It gives an intensive exposure, expertise and experience to the students in real life work environments of industries.
- In this program, Students are expected to study Practical Skills in a Work Lab which is provided by the industry in the form of real workplace and study Theory through e-learning.



More About B.Sc.



01

Duration : 3 Years

02

Mode of Delivery

- Actual working at Work Lab - i.e. industry workplace as per office timings as stipulated at the time of interview
- e-learning through MKCL's e-learning platform on student's laptop, computer or mobile, every day for 2 hours before or after office hours.
- Weekend sessions with mentors, every week, for 2 hours

03

Medium of Communication

- At the Work Lab: i.e. Industry Work Place: English / Hindi / Marathi as applicable

04

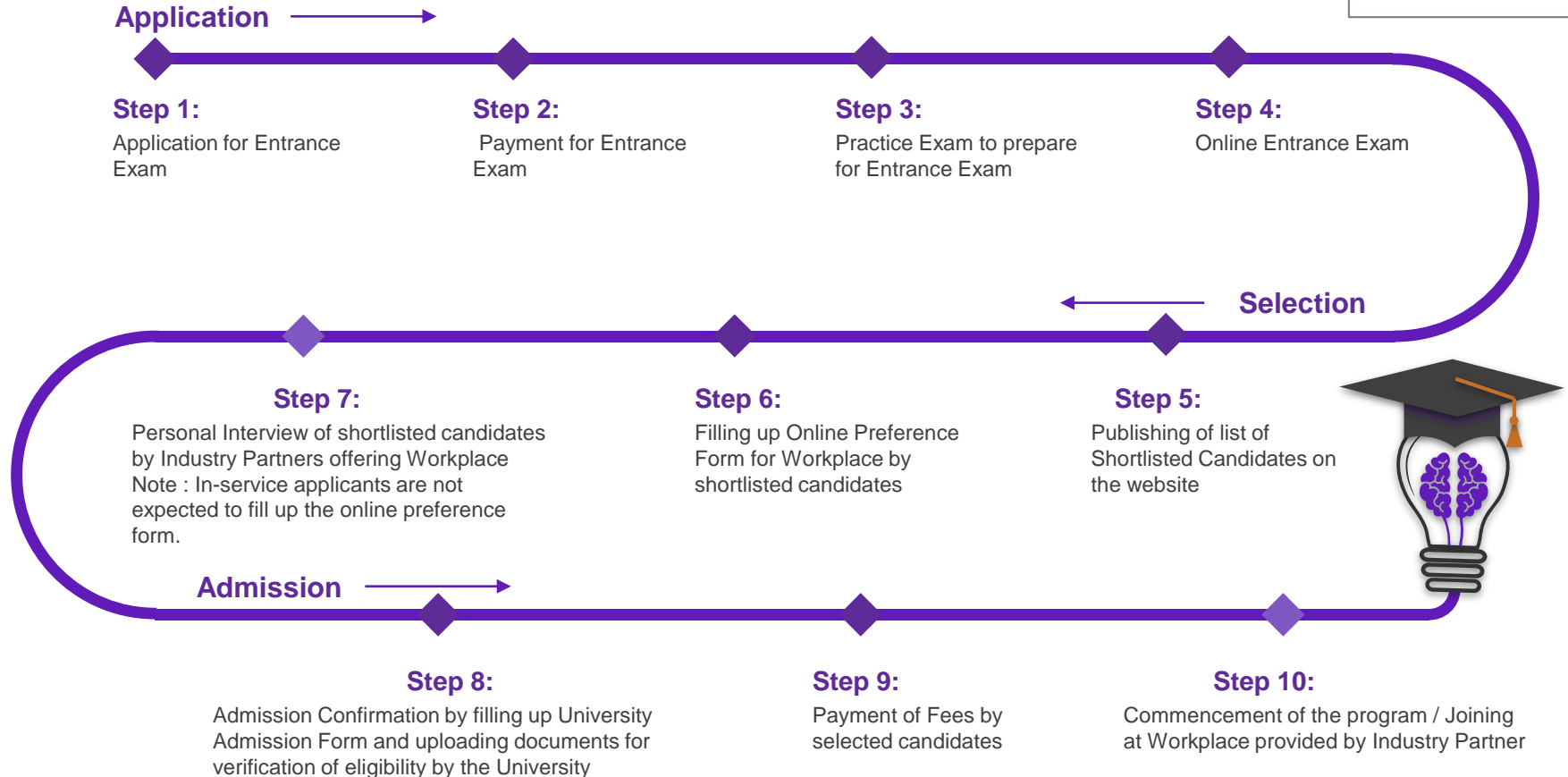
Medium of Learning

- e-learning resources: English
- Discussions and interactions with Mentor: English / Hindi/ Marathi whichever is mutually convenient

B.Sc. (CSA) - Eligibility



Admission Process(Students)



Curriculum

Semester 1:

- Business Communication – 1
- Introduction to IT Hardware
- Introduction to IT Networks
- IT Skills – Basics
- Lab: Troubleshooting IT Hardware
- Lab: Troubleshooting IT Networks
- Lab: IT Skills – Basics

Semester 2:

- Environmental Science
- Computer Security Basics
- Desktop Operating Systems
- Managing and Maintaining Desktop OS
- Lab: Computer Security Basics
- Lab: Desktop Operating Systems
- Lab: Managing and Maintaining Desktop OS

Semester 3:

- Business Communication – 2
- Configuring Windows 7
- Managing and Maintaining Windows 7
- Configuring Windows Server 2008
- Lab: Configuring Windows 7
- Lab: Managing and Maintaining Windows 7
- Lab: Configuring Windows Server 2008

Curriculum(Continue)

Semester 4:

- IT Infrastructure Support Services
- Configuring Windows Server 2008 Active Directory
- Configuring Windows Server 2008 Network Infrastructure
- Managing and Maintaining Windows Server 2008 Network Infrastructure
- Lab: Configuring Windows Server 2008 Active Directory
- Lab: Managing and Maintaining Windows Server 2008 Active Directory
- Lab: Managing and Maintaining Windows Server 2008 Network Infrastructure

Semester 5:

- Soft Skills – 1
- Red Hat Linux Basic Administration
- Configuring and Maintaining Red Hat Linux Systems
- Red Hat Linux Advanced Administration
- Lab: Administering Red Hat Linux Systems – 1
- Lab: Administering Red Hat Linux Systems – 2
- Lab: Administering Red Hat Linux Systems – 3

Semester 6:

- Soft Skills – 2
- Ethical Hacking
- Advanced Security Practices
- Lab: Ethical Hacking
- Lab: Advanced Security Practices
- Project



Study Material

- e-books
- e-learning content
- Student Login for e-learning platform with Learning Management Framework
- Evidence based e-Assessment and e-Assignment Framework
- Access to Work-forum
- Access to Blogs
- Interaction sessions with mentors/domain experts/industry experts in online or face to face mode
- eLearning through MKCL's eLearning platform on student's laptop, computer, or mobile



Computer System Administration

B.Sc.
(Computer System Administration)

SERVICES

Information Technology, IT Infra Assistance, Network administration, Software and Hardware Management, Help Desk Etc.

SECTORS

Telecom, Education, e-Governance, Financial Services, Food & Drink, Hospitality, Front Office, IT Infra Services, Market Research, Logistics and Supply Chain etc.

Job Roles Offered

Desktop Admin

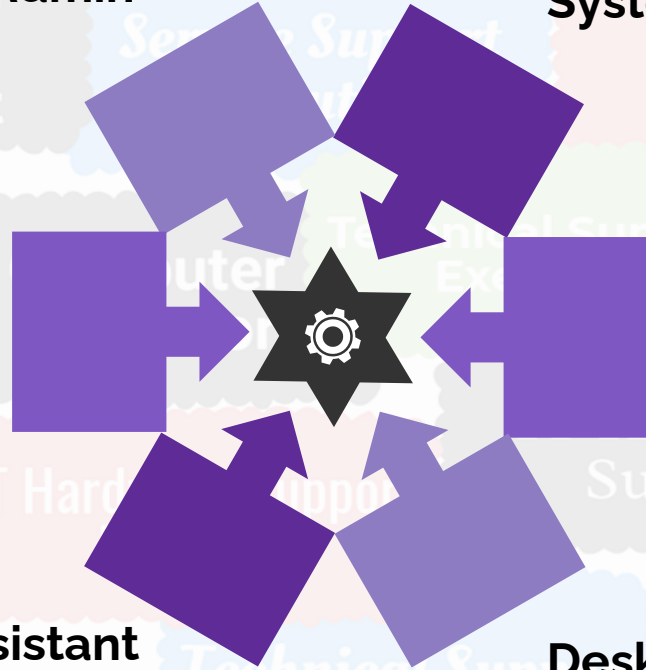
System Admin

Network Administrator

Help Desk Assistant

IT Infra Assistant

Desktop Support Assistant



Stakeholders

MKCL:

- Provide E-Content/Learning Management System
- Govern all operational Tasks
- Provide assistance to all stakeholders

Industry Partner :

- Works as a college for student
- Provide practical learning environment to students
- Assign Work rating
- Provide Remuneration to student

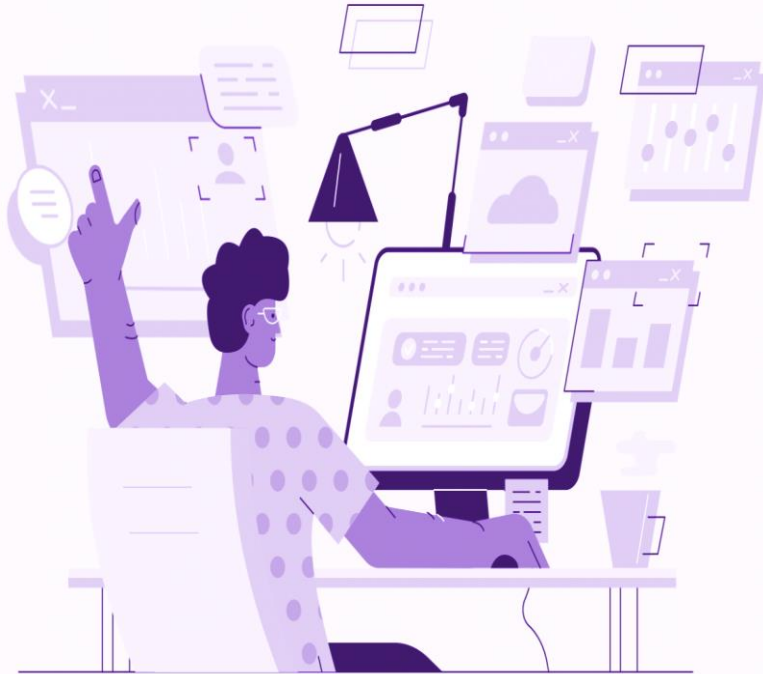
Students :

- Works in Industry partner Company
- Follow all company rules and regulations
- Learn after office hours (No physical classes)
- Became a skilled professional in 3 years

University :

- Provide Degree and examination platform to students
- Assist student in their educational program lifecycle

Benefits to Students



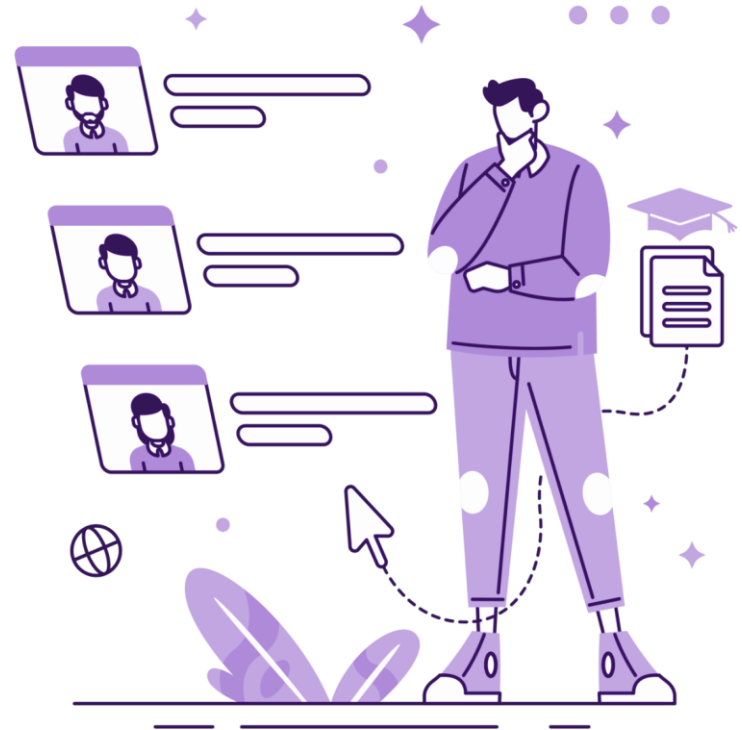
Real Life Work Environments

It gives an intensive exposure, expertise and experience to you in real life work environments of industries. In this program, you are expected to study practical skills in a workplace which is provided by the industry in form of real workplace and study theory through e-learning.

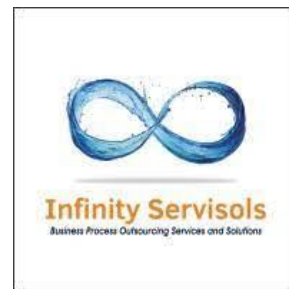
Benefits to Students

Mentoring by industry professionals

In addition to providing Workplace and award of Work Ratings, Industry also contributes to the Degree by Mentoring the Learners. Industry Professionals will be appointed as Mentors to offer a 'human touch' in the overall learning process of the Learners. Mentors would guide Learners to derive theory out of practice at the Workplace.



OUR INDUSTRY PARTNERS



Continue...

OUR INDUSTRY PARTNERS

Let's find out who have joined hands with us in this wonderful journey

100+



know-it

KNOWLEDGE-DIVINE INFORMATION TECHNOLOGY



TATA BUSINESS SUPPORT SERVICES LIMITED



BAIF DEVELOPMENT RESEARCH FOUNDATION

METRIC GLOBAL

Thank You!